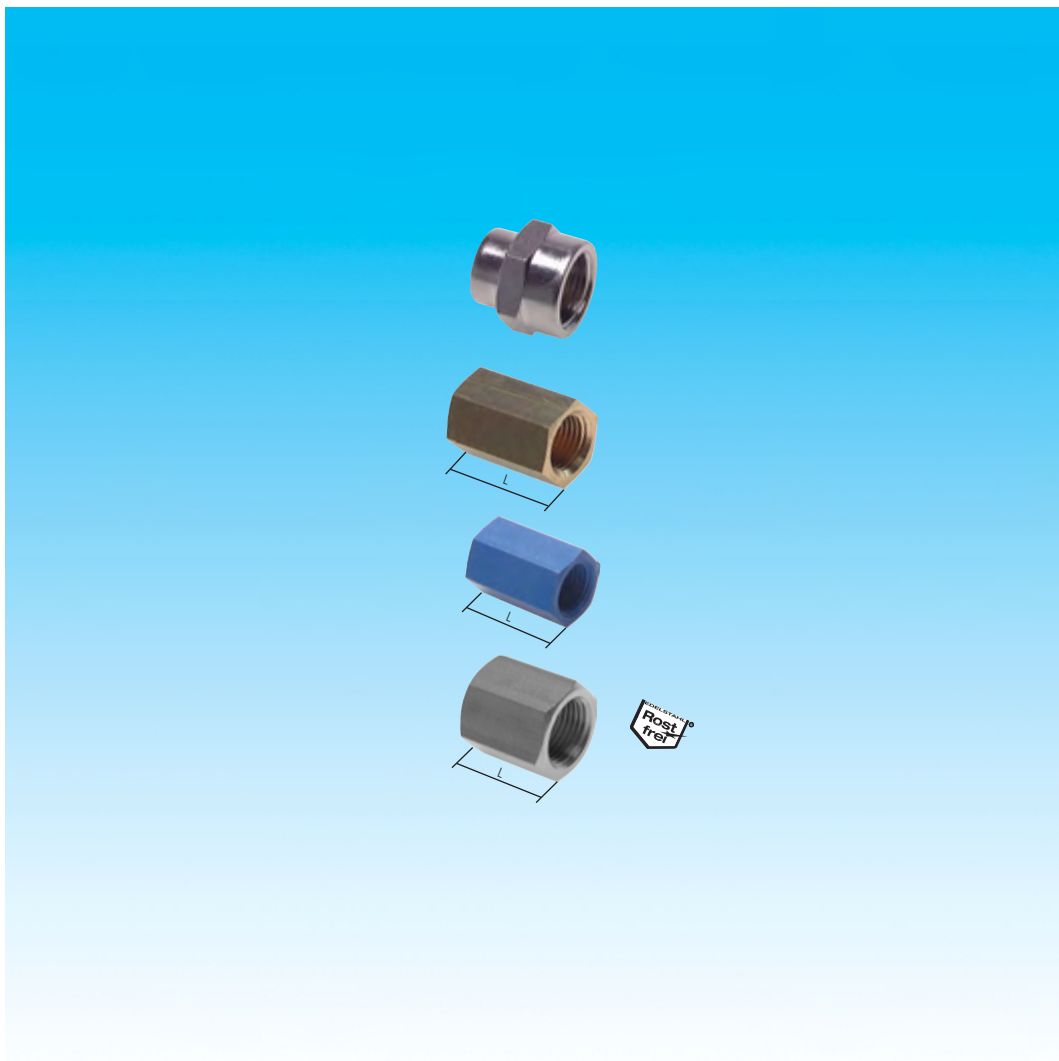


Dokumentation


Muffen / Reduziermuffen - Sechskant, PN 16/40 **- Typ MU ... MSV, MU ... MS,** **MU ... A, MU ... ES -**



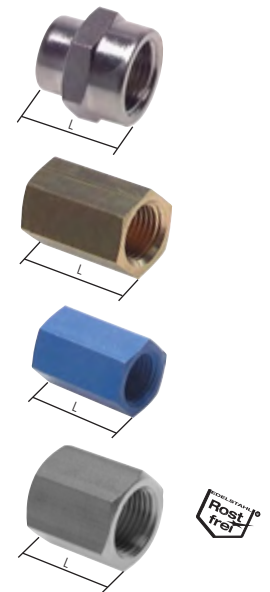
1. Inhalt

2. Artikelnummern und technische Daten	1
3. Abmessungen	1

2. Artikelnummern und technische Daten

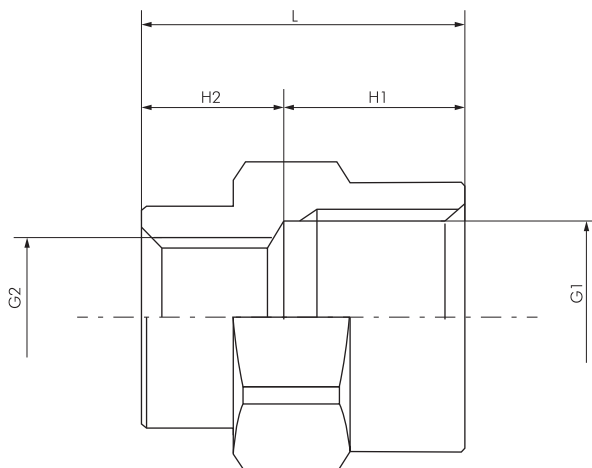
Muffen/Reduziermuffen - Sechskant				bis 40 bar			
Typ 16 bar MS vernickelt	Typ 16 bar Messing	Typ 16 bar Aluminium	Typ 40 bar 1.4571 	Gewinde	Gewinde	SW ¹⁾	L ¹⁾
MU 50 MSV	MU 50 MS	MU 50 A	MU 50 ES	M5	M5	8	11
MU 185 MSV	---	---	MU 185 ES	G 1/8"	M5	---	---
MU 18 MSV	MU 18 MS	MU 18 A	MU 18 ES	G 1/8"	G 1/8"	14	18
MU 1418 MSV	---	---	MU 1418 ES	G 1/4"	G 1/8"	---	---
MU 14 MSV	MU 14 MS	MU 14 A	MU 14 ES	G 1/4"	G 1/4"	17	26
MU 3818 MSV	---	---	---	G 3/8"	G 1/8"	22	20
MU 3814 MSV	---	---	MU 3814 ES	G 3/8"	G 1/4"	---	---
MU 38 MSV	MU 38 MS	MU 38 A	MU 38 ES	G 3/8"	G 3/8"	22	26
MU 1218 MSV	---	---	---	G 1/2"	G 1/8"	24	22
MU 1214 MSV	---	---	---	G 1/2"	G 1/4"	27	27
MU 1238 MSV	---	---	MU 1238 ES	G 1/2"	G 3/8"	---	---
MU 12 MSV	MU 12 MS	MU 12 A	MU 12 ES	G 1/2"	G 1/2"	27	30
MU 3412 MSV	---	---	MU 3412 ES	G 3/4"	G 1/2"	---	---
MU 34 MSV	MU 34 MS	---	MU 34 ES	G 3/4"	G 3/4"	32	36
MU 1034 MSV	---	---	MU 1034 ES	G 1"	G 3/4"	---	---
MU 10 MSV	MU 10 MS	---	MU 10 ES	G 1"	G 1"	41	40
---	---	---	MU 11410 ES	G 1 1/4"	G 1"	50	48
---	---	---	MU 114 ES	G 1 1/4"	G 1 1/4"	50	48
---	---	---	MU 112 ES	G 1 1/2"	G 1 1/2"	55	48
---	---	---	MU 20 ES	G 2"	G 2"	70	56

1) Angaben gelten für Typ Messing. Für alle anderen Typen fragen Sie bitte an.



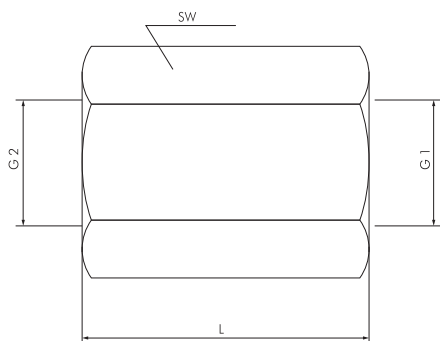
3. Abmessungen

MU ... MSV



Typ	Gewinde G1	Gewinde G2	L	H1	H2
MU 1418 MSV	G 1/4"	G 1/8"	19,5	11,0	8,5
MU 1214 MSV	G 1/2"	G 1/4"	23,0	14,5	8,0

MU ... A



Typ	Gewinde G1	Gewinde G2	L	SW
MU 50 A	M5	M5	12	8
MU 18 A	G 1/8"	G 1/8"	22	14
MU 14 A	G 1/4"	G 1/4"	26	17
MU 38 A	G 3/8"	G 3/8"	32	22
MU 12 A	G 1/2"	G 1/2"	36	27